

www.heartlandhockey.com

Heartland Hockey Camp

PORTAGE LAKE, DEERWOOD, MINNESOTA

6 HOURS OF ICE TIME DAILY!

*One week of unbelievable fun &
a lifetime of unforgettable memories!*



2021

Adult Camp
Goalie Camp
Mite & Dad/Mom Camps
Squirt & Dad/Mom Camps
Pee-Wee & Dad/Mom Camps
Bantam Camps
High School Camps
Hannah Brandt's Gold Medal Hockey Camp
Dani Cameranesi's Gold Medal Hockey Camp

CALL or TEXT 218-820-1604

Out of State Residents
CALL 800-945-7465

Email: steve@heartlandhockey.com

Heartland Hockey Camp
24921 Arena Drive, Deerwood, MN 56444

INSPIRING HOCKEY PLAYERS WORLDWIDE FOR 37 YEARS

Fly-boarding at the Beach



Waterboggan



Minnesota's Vacationland



Heartland Jumbo-tron



Water Trampoline



2021

Heartland Hockey Camp

Welcome to Heartland Hockey Camp, located in Minnesota's most popular vacationland, the Brainerd Lakes Area. As owners, we are pleased and proud to offer to you our 37th summer season of hockey camps. A week at Heartland Hockey Camp is a tremendous gift that you give to your child. We take this gift seriously and realize the enormity of the expectations you have for your child's summer experience at our wonderful camp. It is our goal to exceed those high expectations in every way possible. As Directors of the camp, we will oversee all aspects of your child's camp experience and we know that above all, you are entrusting us to keep your child safe & secure. We take this responsibility to heart and we work diligently & tirelessly to cultivate an environment of responsibility and care amongst our well trained, experienced staff members. Safeguarding your child's physical, emotional and social well-being is always at the forefront of our thoughts and guides our actions on a daily basis. We have taken great pride over the last 37 years to develop a wide variety of training programs that emphasize fun & inspire enthusiasm, along with focusing on building a positive self-esteem. In addition, we continue to encourage our staff to commit themselves to teaching campers the importance of personal fitness, as well as focusing on the campers' development of both basic & advanced hockey skills. Most important of all, we promote building friendships, being polite & thoughtful & developing quality personal traits.

We also encourage our staff to become acquainted with each camper on a very personal level. This has proven to be a valuable and successful approach to each campers's enjoyment during his/her stay at Heartland. In order to reach a higher level of training intensity, we have found that it is important that each camper feels comfortable and confident. Furthermore, there are several factors that make Heartland Hockey Camp a unique experience. First, our camps offer 5 mandatory training sessions each day. No other camp can match our demanding, yet fun-filled, daily training routine. Second, our facility is reserved strictly for our camp clientele only! Third, no other hockey camp can match the convenience of the close proximity of the ice arena to the dorms, dining room, and all other training and recreational facilities. Fourth, we continue to upgrade and improve our facility and training programs. Through research, travel and coaching experience, we are able to offer all campers the newest trends in hockey training. Finally, as owners we strive to provide outstanding personal service to all of our camper clientele. We take great satisfaction in participating in all camp activities and services. We look forward to the opportunity of providing your child with such a positive experience.



Sandy & Steve Jensen

Camp Setting

Located in one of the most popular and beautiful vacation areas in North America, the Heartland Hockey Camp is situated on a 164-acre tract of wooded and gently rolling hills located just 2 miles south of Deerwood, Minnesota, adjacent to Portage Lake. During the campers stay at Heartland, it is not rare to see a bald eagle flying overhead and pulling a fish from the end of your line is an everyday occurrence. Our arena is nestled in the heart of Minnesota's Vacationland, surrounded by lakes, streams, and majestic pine trees. Our facility is conveniently located just 20 minutes from the Brainerd Airport, which offers regular daily commercial air service. Furthermore, the Heartland Hockey Camp is easily accessible to the Twin Cities, which are located 120 miles south of Deerwood. Families are encouraged to take advantage of our beautiful vacation area while participants are at camp.

Private Lesson Hockey Rink

We are proud & pleased to announce that our private lesson rink is scheduled for completion on June 20, 2021. The dimension of the skating surface will be 110 ft. x 65 ft.. During the summer of 2021 we will offer the following programs in this new rink; 1) Private lessons at your preferred time, throughout the morning, afternoon & evening hours, 2) Hockey & Adventure Camps for mites, squirts & pee-wees, 3) Additional optional ice time for all campers, during the afternoon & evening hours, 4) 3 on 3 summer & fall leagues, 5) Ice rental for groups & teams.



HEARTLAND H



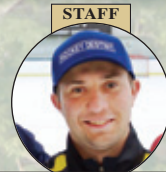
STAFF
STEVE JENSEN
Camp Director



STAFF
SANDRA JENSEN
Director – Fitness



STAFF
MATT LEON
Director of Goalie Camp



STAFF
NILS SEMJONOVS
Owner of Hockey Destiny



STAFF
MIKE DONAGHUE
Head Coach Fergus Falls High



STAFF
JOE HERDA
Assistant General Manager/
Goalie Coach

Stick Handling Drills



Campfire



NEW Weight Room



Water Skiing



The Most Frequently Asked Question:

“Which camp is right for me?”

We have four levels of training sessions available to you in 2021.

- **Skills Camps** are for players of all levels – beginner, intermediate and advanced level players.
- **Select Camps** are for average to above average skill level players.
- **Super Select Camps** are for above average to advanced skill level players.
- **AAA Camps** are for advanced skill level players only!

Heartland Skills Camps 2021

Our Skills Camps are for players of all skill levels, including beginners, intermediate and advanced players. The Skills program will feature a strong emphasis on power skating, power shooting, creative stick handling and basic passing drills. At the Pee-Wee level, we will also place a very high priority on body checking instruction, including how to give and take a body check. We will demonstrate the dangers of checking along the boards and help players better understand preventative methods to avoid serious injury as a result of giving or receiving a body check.

Heartland Select Camps 2021


Our Select Camps are designed to provide opportunities for players who have a very strong desire to reach a higher level of competition and skill development. The Select Camps are reserved for intermediate to advanced level players only! We are seeking players that are coachable, and display a positive attitude. In addition, we hope to attract dedicated athletes that are cooperative, attentive and disciplined. The criteria above, along with a minimum of 3 years of playing experience and a letter of recommendation from someone within your organization. The training format will consist of high-speed European flow drills, development of a quick transition game, top level offensive and defensive strategies, utilization of gap control and much, much more! This program is for travel players with average to above average basic hockey skills. This program is not available for beginners.

Heartland Super Select Camps 2021

Owner and Director Steve Jensen is pleased to offer the 2021 Heartland Super Select Hockey Camps. These Super Select Camps will be offered to Squirt, Pee-Wee, Bantam and High School players. These camps are designed to provide opportunities for players who feel they are at the top of their game and desire world-class coaching and competition. All sessions will be directed by camp owner, Steve Jensen. Steve is a full-time teaching professional with over 40 years of instruction experience, including 15 years of experience playing International and NHL hockey, 5 U.S. National teams, and 37 years as Executive Director of the Heartland Hockey Camps. At the college level, he was a participant in 2 NCAA finals, helping win the National Championship in 1975 while playing at Michigan Tech University. For two consecutive years, Steve was named to the NCAA All-Tournament Team. He started his professional career in his hometown with the Minnesota North Stars. Then, he played four years with the Los Angeles Kings, where he became the fifth American in NHL history to score more than 100 career goals. At the time Steve retired from the NHL, he was the leading scorer among all the active American-born players in the National Hockey League. Steve also has extensive experience in International hockey. As a member of the 1976 U.S. Olympic Hockey Team, he led the team in scoring with 52 goals. Steve also spent 4 seasons playing and coaching in the professional leagues of Switzerland and Austria. During the Super Select Camps, Steve will be placing a high emphasis on advanced North American and European development play. To qualify for the Super Select Camps, all applicants must have a minimum of 4 years of competitive hockey experience. This camp is for exceptionally skilled players that skate well both forward & backward, handle the puck well while skating, reads & reacts to the team play quickly and is able to make an accurate pass to an open teammate whenever necessary. A letter of recommendation from a current coach is also a requirement to attend this camp.


HOCKEY CAMPS

STAFF




CHRIS BROWN
Head Coach Augsburg College

STAFF



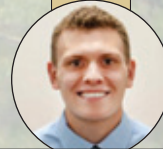
SEAN REKENY
General Manager

STAFF



JAKE BRENK
NHL Referee

STAFF



COLIN BAILEY
Head Coach of the Wausau RiverWolves Jr. Team

STAFF



REED LARSON
U.S. Hockey Hall of Fame

STAFF



TOM YOUNGMANS
Chicago Blackhawks Scout

Heartland AAA Camps 2021

Once again, during the summer of 2021, we will be offering accelerated AAA programs for the Pee-Wees and Bantams. Head coaches for these four programs will be Steve Jensen and Jake Brenk. Both Steve and Jake have extensive experience as coaches at Heartland Hockey Camp and have played professionally in both North America and Europe. To qualify for these four programs, you either must have prior AAA experience or receive a written/verbal invitation from Coach Steve or Coach Jake. All players attending these camps must be proficient at both forward and backward crossovers with and without the puck, must be able to read the play well while controlling the puck and find the open man, must be able to pass the puck accurately to an open teammate and must understand positional play very well. To learn more, please email steve@heartlandhockey.com.

Goalie Training Camp 2021

The Goalie Camp will be directed by Matt Leon and it will be his 3rd summer as a head coach at our camp. Matt played junior hockey in the NAHL, college hockey for SUNY-Genesco and he currently plays pro hockey for the Quad City Storm, in the SPHL. Matt has worked extensively in private training sessions with NHL goaltender, Jamie Storr. Matt will be assisted by Jon Hendrickson, owner of Solid Gold Goaltending, Dylan Hvambal, from Mega Goaltending & Joe Herda, goalie consultant for the Northern Lakes Lightning Teams.

Father/Son & Mother/Daughter Camps

Mom and dads are invited to bring their skates, as we invite you to join our staff and your son/daughter in all of the camp activities. It is a great way to enjoy a father/son or mother/daughter get away. We pioneered this program at the Mite level over 30 years ago. Due to the overwhelming response we are now offering the same option to parents of players of all ages. Please understand that this is an optional program. It is not a requirement that moms and dads attend our camp with Mites, Squirts, or Pee-Wees. Mites, Squirts and Pee-Wees that have a desire to attend camp without a mom/dad are encouraged to do so. For moms/dads wishing to attend camp with their son/daughter, you may do so for a fee of \$1,450.00. This fee covers your meals, lodging, recreational activities, off-ice and on-ice training sessions. For parents not wishing to participate in the on-ice activities, your fee will be \$750.00. Parents staying off-site wishing to skate and eat meals, the cost will be \$950.00.

Heartland Adult Camp

The Heartland Adult Camp is offered to players 18 years of age and older. Players of all skill levels are welcome into our program. We offer three skill groups to choose from: Level 1, Level 2, and Level 3. Each group is limited to 30 skaters and two goalies. All adult campers will have the option of seven hours of ice time each day! Level 1 groups will consist of beginners, novice and low-level intermediate players. Level 2 groups are intermediate level and low-level advanced players. Level 3 is for advanced level players only. Each group will receive 1.25 hours training sessions in the morning and the afternoon. There will be a one-hour instructional scrimmage for each group in the early evening. There will also be 3.5 hours of optional ice time every night from 8:30 p.m. to 12:00 a.m. for private lessons, specialized clinics, skill development and pickup games. We will also conduct a very comprehensive and educational classroom/video review session each day utilizing our new high-tech, simultaneous video analysis system. There will be a one-hour power shooting session each day utilizing our radar guns and electronic display modules. Optional recreational activities include swimming, water skiing, boating, fishing, golf, tennis and roller hockey. On-ice training sessions will emphasize improving individual hockey skills including skating, passing, shooting, stick handling, etc. We will also focus on team play, as all campers will be taught effective offensive attacks, successful defensive strategies and learn from critiqued, video-taped team scrimmages.

Nautilus Slide



State of Hockey



Laser Speed Testing



Typical skill level test scores from the 2011 Adult Camp

SKILLS TEST	LEVEL 1	LEVEL 2	LEVEL 3
Acceleration	3.2 sec.	2.9 sec.	2.7 sec.
Stick Handling Test	26 sec.	23 sec.	22 sec.
Forehand Shot	42 mph	47 mph	50 mph
Backhand Shot	36	39	41
Slap Shot	48	52	59
Forward	14-19	17-19	19-22
Backward	12-14	14-16	16-18

2021

STAFF



DANI CAMERANESI
U.S. Olympian

STAFF



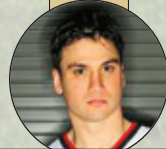
HANNAH BRANDT
U.S. Olympian

STAFF



GORDIE ROBERTS
Stanley Cup Champion

STAFF



JAMIE LANGENBRUNNER
U.S. Olympian &
Stanley Cup Champion

Gold Medal Hockey Camps

During the summer of 2021, Dani Cameranesi, a member of the 2018 U.S. Olympic Gold Medal Hockey Team, will again be conducting Dani Cameranesi's Gold Medal U10/U12 Hockey Camp. This camp will be offered the week of June 20-26, 2021. The cost of this camp will be \$1750.00 and this is an all-inclusive fee. This is an outstanding opportunity for your daughter to learn from and train with an olympic hockey champion!

We will once again be offering Hannah Brandt's Gold Medal U14 & U16 Hockey Camp, June 20-26, 2021.

These two camps are designed for exceptionally skilled & highly motivated players, between the ages of 9-16 years old. All attendees must exhibit excellent skating skills, both forward & backward, must understand the importance of positional play & must be confident and able to make an accurate pass to an open teammate. We are seeking players that are passionate, dedicated, devoted and inspired, to play the sport of ice hockey. All campers must be cooperative, willing to listen and have a strong desire to reach high achievement. A letter of recommendation from a coach is a requirement to attend this camp and all players must have a minimum of three years of playing experience.

Heartland Hockey & Adventure Camps

Our Heartland Hockey & Adventure Camp is our newest program. This program will combine hockey skill development, along with all of our outstanding recreational & adventure options. Each camper will receive 1.5 hours of on-ice training time in the morning & 1.5 hours of on-training ice time in the late afternoon. We will also provide all campers with longer than normal recreation breaks, along with more recreational options. Some of our new options included in this program will be golfing nine holes, tennis training, lacrosse training, soccer training, archery, mountain biking, sailing, water skiing, fishing excursions and overnight outdoor camping excursions. All campers will also have the option of gaining 4 additional hours of optional ice time in our new 3-on-3 rink, during the afternoons & early evenings. We will also provide all campers participating in the program the opportunity to schedule private hockey lessons any time through out every day of the week.

NEW for 2021

Private Lessons at Your Own Preference

The construction of our new private lesson rink will be completed by June 1, 2021. This new facility will provide all of our campers with the opportunity to schedule a private lesson any time of the day or night, during the weekdays, beginning at 7:00 a.m. each day & ending at 10:00 p.m., each evening. All campers will be permitted to schedule private lessons at their own preference, based upon approval from their parents. Private lessons will also be available on Sundays from 8:00 a.m.-10:00 p.m., Saturdays from 12:00-10:00 p.m. The rate for private lessons starts at \$100.00 per hour.



PLEASE CALL 218-820-1604

Out of State Residents CALL 800-945-7465

Relaxing on Portage Lake



Classroom



Parachute Training



On-Ice Checking Stations



Mini-Golf



Walking the Plank



Power Shooting



Making New Friends



Bungee Cord Training



Heartland Spin Wheel



HEARTLAND

Team Play Development

Hockey is a game which requires all players to learn to play as a team, and learning how to play as a team is an important part of a developing player. Daily instruction in the area of team play and strategy will help give each player a better understanding of their role on the ice. Players will learn breakout patterns, offensive position, defensive and neutral zone position. Emphasis will be placed on the role of defenseman, forward, and goaltender in Team Play Development. Students will learn the importance of team skills such as desire, pride, trust, motivation and working hard to achieve a common goal — skills that will benefit players throughout their adulthood.

Off-Ice Training

The Heartland Hockey Camp has a reputation of being very demanding physically. Our daily off-ice training programs consist of three mandatory workouts designed to improve each player's strength, power, agility, quickness and endurance. Our staff will conduct a vigorous daily dryland training session that will include sprint intervals, plyometrics, quick foot movement, agility courses and drills designed to improve explosiveness. Each camper will also participate in an intense circuit weight-training session consisting of 20 workout stations in our private weightroom. Additionally, we will conduct daily dryland power shooting sessions, striving to perfect and improve shooting speed and accuracy. We also stress the importance of psychological discipline. Research has shown that reaching your training goal depends more on the function of the psychological mind, than that of the physical body. All campers will be introduced to the importance of positive attitude reinforcement, relaxation methods and the application of sports visualization to achieve training performance. Finally, we will focus on the values of proper nutrition and diet, daily exercise and prevention of drug abuse.

On-Ice Training

Students will receive up to six hours of on-ice training each day. Our morning session is dedicated to individual skill development and it is 2 hours in duration. In the afternoon session, we focus on team play and group tactics which also lasts 2 hours. In the evening, all campers are eligible to participate in our open hockey session which lasts 2 hours. All sessions are coordinated and directed by our highly qualified staff, AT A STUDENT TO INSTRUCTOR RATIO OF 5:1.

Player Analysis and Evaluation Programs

In order to evaluate individual strengths and weaknesses, each camper will be tested in 12 separate areas. These evaluations will also help determine campers current skill level. Our testing program will include upper and lower body strength, endurance, quickness, skating speed, shooting speed, etc. Individual data will be recorded for analyzing performance and development. We will utilize our radar speed guns to evaluate individual skating speed both forward and backwards, and we will also record shooting speed, testing each player's forehand, backhand and slapshot. Our staff will also assess individual skating skills and techniques, utilizing our video cameras and our new high-tech skating acceleration laser timing device. We can give you immediate on-ice correction, applying bio-mechanical analysis of skating techniques along with proper shooting and body-checking mechanics. We have found that these testing and evaluation procedures are very successful in improving skating acceleration, skating speed, shooting speed and safe body-checking techniques. An additional feature of our evaluation program will consist of daily video review classes, analyzing campers strengths and weaknesses on the ice as well as daily lectures concerning effective hockey tactics. Upon completion of the camp, each camper will receive an evaluation and a training program planned to develop players weaknesses in order to achieve the highest level of skill development.

A TYPICAL YOUTH CAMP SCHEDULE

6:00 a.m.	Wake up
6:15 a.m.	Breakfast
7:00 a.m.	On-Ice Training
9:45 a.m.	Video Review
10:30 a.m.	Circuit Weight Training
11:30 a.m.	Lunch
12:30 p.m.	Dryland Power Shooting
1:30 p.m.	Recreation
3:00 p.m.	On-Ice Training
5:30 p.m.	Dinner
7:00 p.m.	Dryland Training
8:00 p.m.	Optional Ice, Movies, Relaxation, etc.
10:30 p.m.	Lights Out

A TYPICAL ADULT CAMP SCHEDULE

7:30 a.m.	Wake Up
8:00 a.m.	Breakfast
9:00 a.m.	On-Ice Training
10:45 a.m.	Video Review
11:45 a.m.	Lunch
12:45 p.m.	On-Ice Training
2:00 p.m.	Recreation
4:30 p.m.	Classroom
5:00 p.m.	Dinner
6:00 p.m.	Power Shooting
7:00 p.m.	Evening Scrimmage
8:30 p.m.	Optional Ice, Private Lessons, Pickup Games

D HOCKEY

Medical Staff and Medications

The Heartland Hockey Camps will be staffed with a full time nurse and EMT. All illnesses and injuries will be attended to by our medical staff. In those situations that require additional medical assistance, the campers will be taken to the Cuyuna Medical Center, conveniently located just 6 miles north of the Heartland Hockey Camp.

At the time of registration, we will have a book that you should register any medical problems and medications. Our nurse will administer the medications at the appropriate times.

Supervision

The Heartland Hockey Camp takes pride in itself, with an experienced staff of counselors and instructors, all of whom reside in the complex with the students, creating the unique situation of 24-hour availability to the students.

To further ensure our campers safety and well-being, we have installed a new state-of-the-art DVD video surveillance system. Our 32 cameras are strategically located throughout our 164-acre campus. This security feature allows our staff members the advantage of monitoring all camp activities 24 hours a day.

New for the summer of 2021, we will introduce our campers to our Digital Camper Locator System. This new system allows us to view campers' movement at various points throughout our entire campus. As campers pass through numerous strategically placed "track points," they will be tagged electronically by our new Locator System.

Student Requirements

Hockey camp students are required to bring their own protective equipment. Students should also bring a weeks supply of recreational and athletic clothing, towels and personal items. The Heartland Complex has a complete laundry facility. Campers are responsible for supplying their own bedding. Sleeping bags are preferred.

Check-in and Check-out

Hockey camp students should arrive on Sunday, anytime between 1:00 p.m. and 3:00 p.m. Check-out time is 11:00 a.m. on Saturday.

Banking and Security

All campers will be offered the option of securing their spending money in our banking system. Campers will have the option of secured dormitory rooms. There will be a refundable deposit of \$10.00 for all keys to secured rooms. In addition, all campers will be provided with a private locker room storage area.

Recreation

The campers have adult-supervised options during their scheduled recreation times. These include swimming, water skiing, tubing, boating, canoeing, fishing, and other water sports at our private beach on Portage Lake, located directly adjacent to the Heartland Hockey Camp. Other adult-supervised options available during recreation time include volleyball, field sports, roller hockey, basketball, weight lifting, golf, tennis and miniature golf. If your camper has a strong desire to play golf, tennis or fish, he/she should bring his/her clubs, racket or fishing pole.

Dorm Rooms

Our dorm rooms vary in size, as a result, each camper will have the opportunity to request his/her roommate. Please indicate your requested roommates on our application form, as this will assure you that your desires will be met. Our rooms can accommodate groups ranging from 2 to 10 campers.

Saturday Stay-Overs

If it is more cost efficient or convenient for you, we will allow campers to come in a day early or stay over an extra day for a cost of \$100.00. This fee will include lodging Saturday night and meals on Saturday and Sunday, extensive ice and recreational opportunities.

Station Training



Fantastic Fishing



Heartland Mile



Checking Drills



Heartland Summit



2021

2021 Heartland Hockey Camps Schedule

Our non-boarding fee of \$1,300.00 per week is for campers staying off our campus. The non-boarding fee includes ice time, camp jersey, camp evaluation, team photo, off-ice training and recreational activities. Boarding fee includes all the above, plus lodging and meals.

Hockey Camp Fee

The one-week skills camp fee is \$1,600.00. This fee covers the cost of the instructional staff, extensive ice time, room, meals, recreational activities, power shooting and hockey camp jerseys. Families registering more than one child will receive a \$50.00 discount off the total of the children's rates.

Day campers will only be accepted at the reduced rate of \$1,300 during the June 20-26, 2021 session and \$1,300 during the July 4-10, 2021 week. However, day campers will be admitted at full price during any other sessions throughout the summer.

Cancellation Policy

No refunds will be given after April 1st, or due to late arrival or early departure. Your deposit will be credited and applied to a future camp fee. For those campers who find it necessary to cancel before April 1st, there will be a 25% fee for administrative costs. There will be no refunds for credits unused, also, no refund if a student is expelled, or does not attend or leaves on their own accord. There is no date deadline for camp registration. We will accept applications until the camps are full. Final balances due date, for applicants registering early, is April 1, 2021. Campers may apply to any open camps anytime after April 1, 2021 until each particular camp is full. There will be a late fee of \$50.00 assessed to all second payments not received by April 1, 2021.

*Applications will be accepted after April 1, 2021, for any camp, if space is available at the time. After April 1, 2021, the application must be accompanied by payments in full, however, there will be no late charge assessed.

Travel and Transportation Information

If you are requiring transportation by our staff to or from the Brainerd Lakes Regional Airport, please send all travel information to travel@heartlandhockey.com or dylan@heartlandhockey.com. All unaccompanied minors being picked up by a Heartland Hockey Camp representative, must fly into the Brainerd Lakes Regional Airport. We will pick up and drop off campers at the Brainerd Airport at any time, on any day. The fee for this service is \$50.00 roundtrip or \$25.00 one way. In the event that you would like to arrange transportation to our camp from the Minneapolis/ St. Paul International Airport, please contact Executive Express, at 888-522-9899, or go to their website at <https://www.executiveexpress.bix> & please note that they do not offer provisions for unaccompanied minors.

NEW in the Fall of 2021

We will be offering week-end mini-camps for players of all ages from Aug. 20-October 3, 2021. The fee for our week-end mini-camps will be \$175.00 per player & this fee will include lodging, however, no meals. One parent may stay for FREE. Please go to our website, www.heartlandhockey.com, to learn more.

	FEES	
	(Non-Boarding)	(Boarding)
(Mite age approximately 5-8 years)		
Mite Skills Camp, June 20-26, 2021	\$1,300.00	\$1,600.00
Mite Select Camp, June 27-July 3, 2021		\$1,650.00
Mite Skills Camp, July 11-17, 2021		\$1,600.00
Mite Hockey and Adventure Camp, July 18-24, 2021		\$1,200.00
Mite Select Camp, July 25-31, 2021		\$1,650.00
(Squirt age approximately 8-10 years)		
Squirt Skills Camp, June 20-26, 2021	\$1,300.00	\$1,600.00
Squirt Select Camp, June 27-July 3, 2021		\$1,650.00
Squirt Hockey and Adventure Camp, July 4-10, 2021		\$1,200.00
Squirt Skills Camp, July 11-17, 2021		\$1,600.00
Squirt Select Camp, July 18-24, 2021		\$1,650.00
Squirt Select Camp, July 25-31, 2021		\$1,650.00
Squirt Super Select Camp, July 25-31, 2021		\$1,675.00
Squirt Hockey and Adventure Camp, Aug. 1-7, 2021		\$1,200.00
(Pee-Wee age approximately 10-12 years)		
Pee-Wee Hockey and Adventure Camp, June 20-26, 2021		\$1,200.00
Pee-Wee Select Camp, June 27-July 3, 2021		\$1,650.00
Pee-Wee AAA Camp, July 4-10, 2021	\$1,300.00	\$1,700.00
Pee-Wee Skills Camp, July 11-17, 2021		\$1,600.00
Pee-Wee Select Camp, July 18-24, 2021		\$1,650.00
Pee-Wee Hockey and Adventure Camp, July 25-31, 2021		\$1,200.00
Pee-Wee Select Camp, Aug. 1-7, 2021		\$1,650.00
Pee-Wee Super Select Camp, Aug. 1-7, 2021		\$1,675.00
(Bantam age approximately 12-14 years)		
Bantam Super Select Camp, June 27-July 3, 2021		\$1,675.00
Bantam Hockey and Adventure Camp, June 27-July 3, 2021		\$1,200.00
Bantam AAA Camp, July 4-10, 2021	\$1,300.00	\$1,700.00
Bantam Hockey and Adventure Camp, July 11-17, 2021		\$1,200.00
Bantam Super Select Camp, July 18-24, 2021		\$1,675.00
Bantam Select Camp, July 25-31, 2021		\$1,650.00
Bantam Select Camp, Aug. 1-7, 2021		\$1,650.00
(High School age approximately 15-18 years)		
High School Camp, July 11-17, 2021		\$1,725.00
(Boarding)		
Hannah Brandt's Gold Medal U14/U16 Hockey Camp June 20-26, 2021		\$1,750.00
Dani Cameranesi's Gold Medal U10/U12 Hockey Camp June 20-26, 2021		\$1,750.00
Goalie Training Camp, July 4-10, 2021		\$1,600.00
(No age restrictions for the Goalie Camp)		
Adult Camp, Aug. 8-14, 2021		\$1,725.00
Mom or Dad (Optional), Full service fee		\$1,450.00
Mom or Dad (Optional), Dorm lodging & meals fee		\$550.00
Mom or Dad (Optional), Dorm lodging, meals & recreation fee		\$750.00
Mom or Dad (Optional), No lodging; ice & meals only		\$950.00
Upgraded Dorm Room (AC & mini fridge)Add \$200 to the above options	

Please note: All Camps are available for mom or dad to attend, this is an optional feature, it is not mandatory that mom or dad attend with their campers.